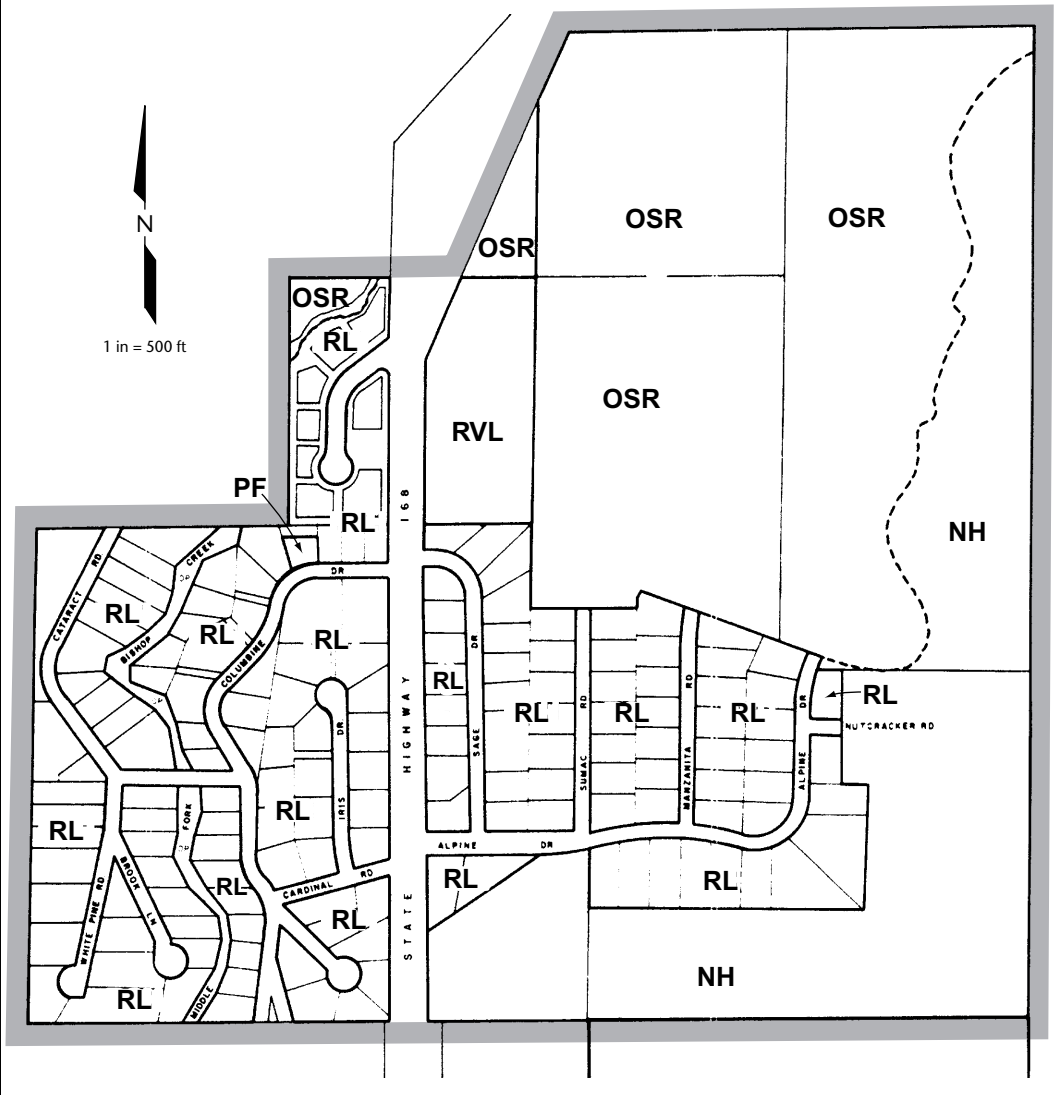
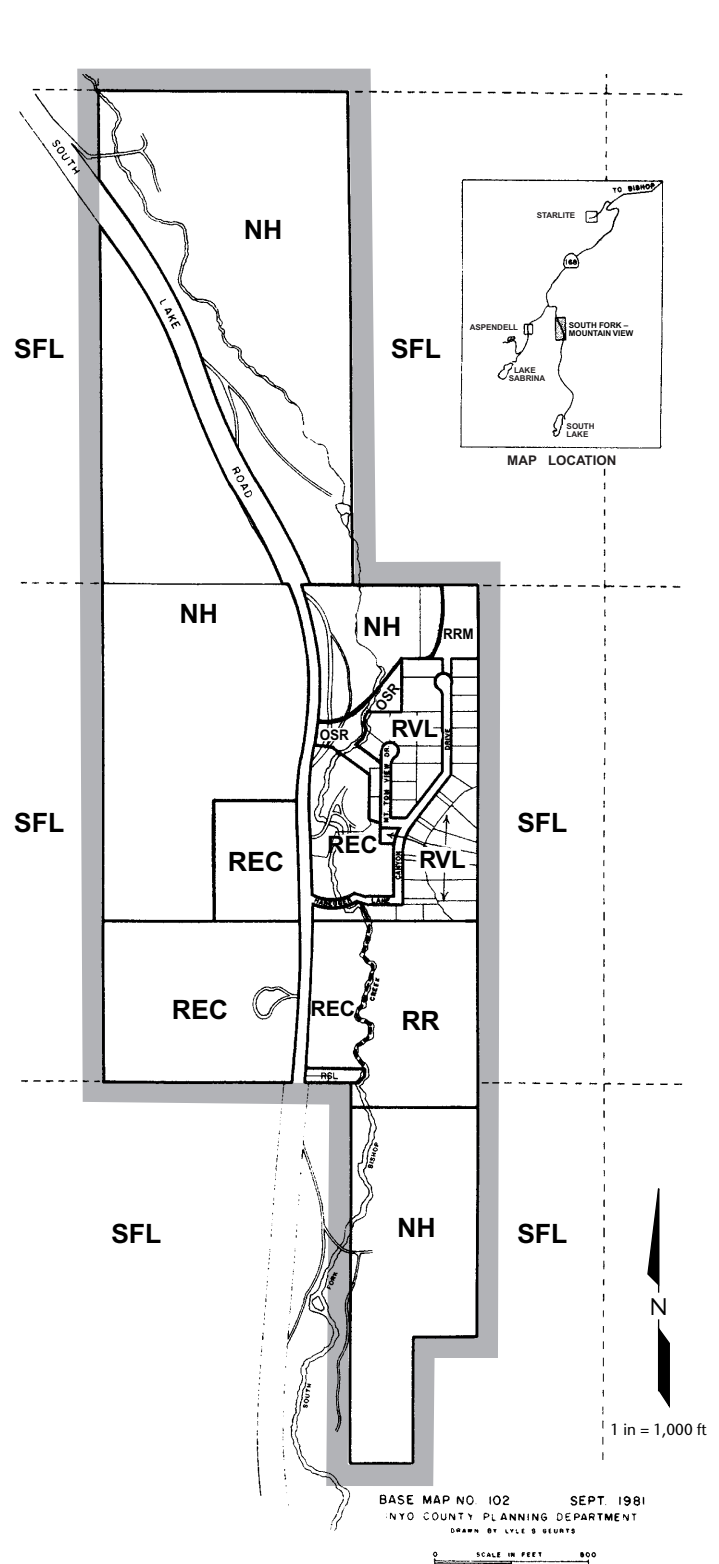


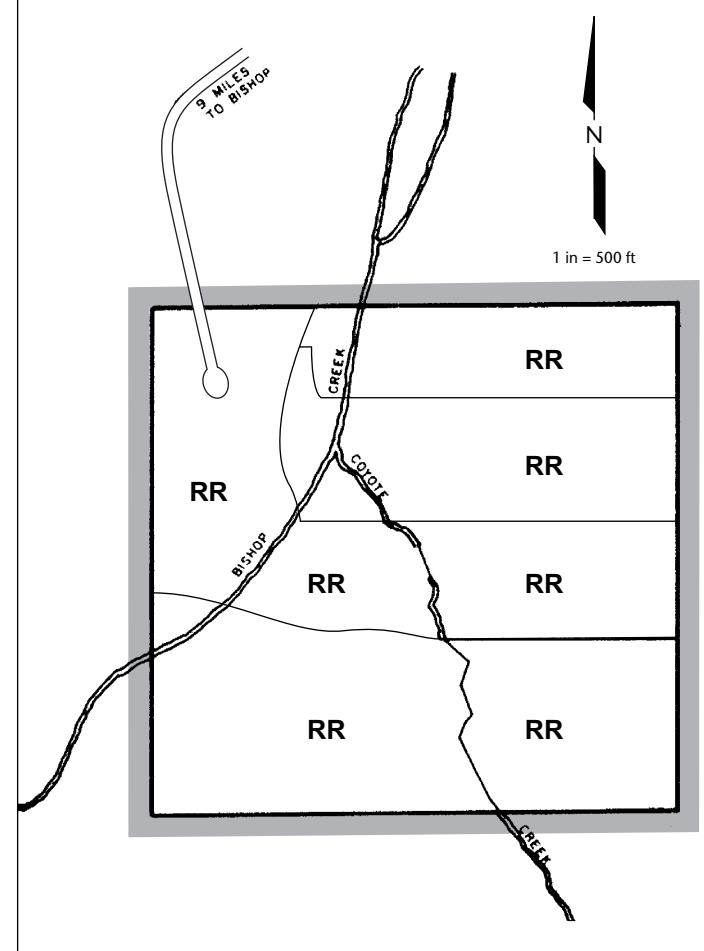
Aspendell



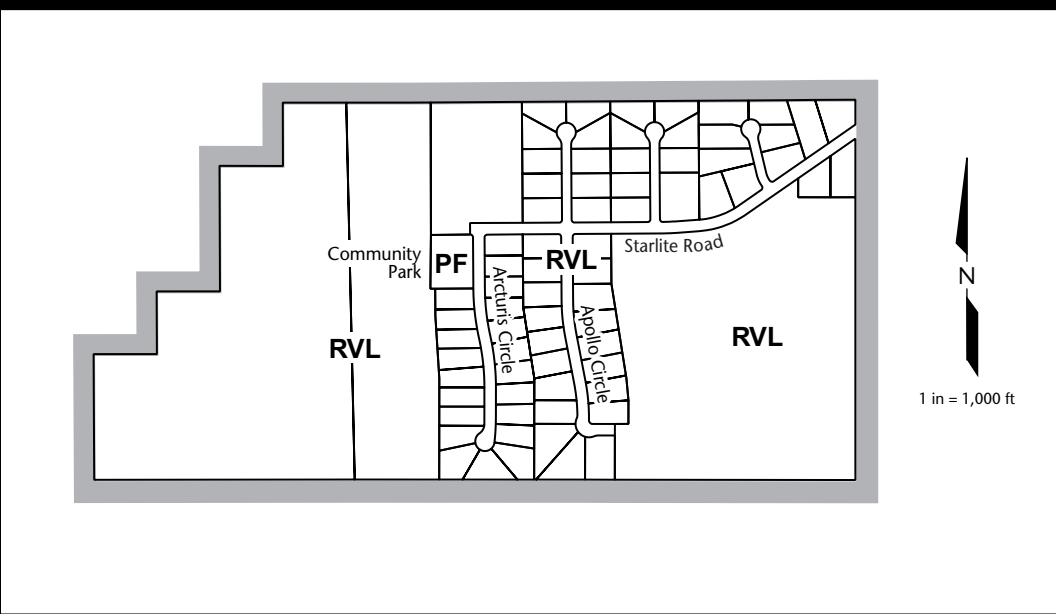
South Fork – Mountain View



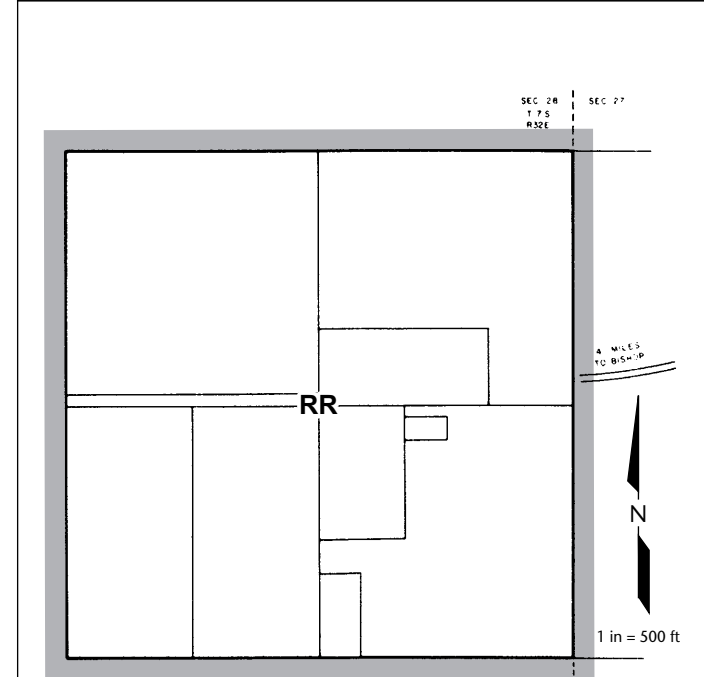
Sky Rock



Starlite Estates



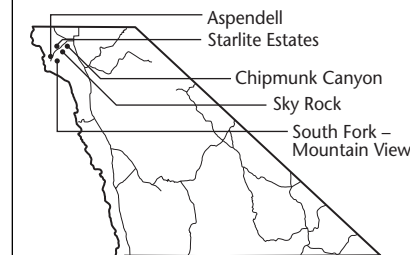
Chipmunk Canyon



Inyo County General Plan

Land Use and Conservation/
Open Space Elements

Diagram 10



Key to Land Use Designations

- RESIDENTIAL**
- RR Residential Ranch
 - RE Residential Estate
 - RRM Residential Rural Medium Density
 - RRH Residential Rural High Density
 - RVL Residential Very Low Density
 - RL Residential Low Density
 - RM Residential Medium Density
 - RMH Residential Medium-High Density
 - RH Residential High Density
- COMMERCIAL**
- CBD Central Business District
 - RC Retail Commercial
 - HC Heavy Commercial/Commercial Service
 - REC Resort/Recreational
- INDUSTRIAL**
- LI Light Industrial
 - GI General Industrial
- OTHER**
- NH Natural Hazards
 - OSR Open Space and Recreation
 - PF Public Service Facilities
 - A Agriculture
 - NR Natural Resources
 - SFL State and Federal Lands
 - TL Tribal Lands/BIA

Certificate of Adoption

I hereby certify that these elements, consisting of a text and thirty-one (31) maps are the land use and conservation/open space elements of the Inyo County General Plan that was recommended for adoption by the Inyo County Planning Commission on _____

Attest:

Chair, Inyo County Planning Commission

Charles S. Thistlethwaite, Director

Certificate of Adoption

I hereby certify that the elements consisting of a text and thirty-one (31) maps are the land use and conservation/open space elements of the Inyo County General Plan that was adopted by the Inyo County Board of Supervisors on _____

Attest:

Chair, Inyo County Board of Supervisors

Clerk of the Board