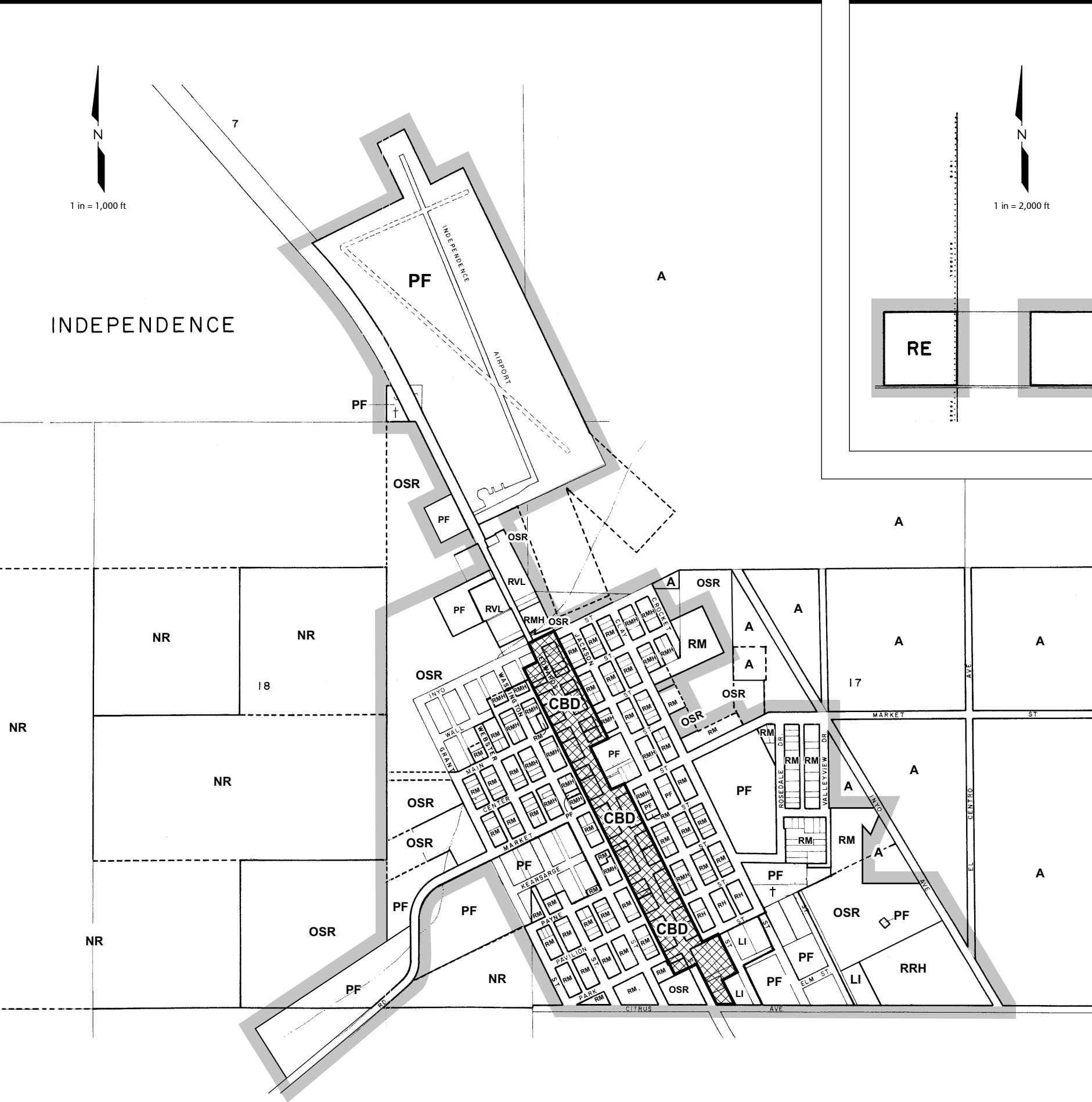
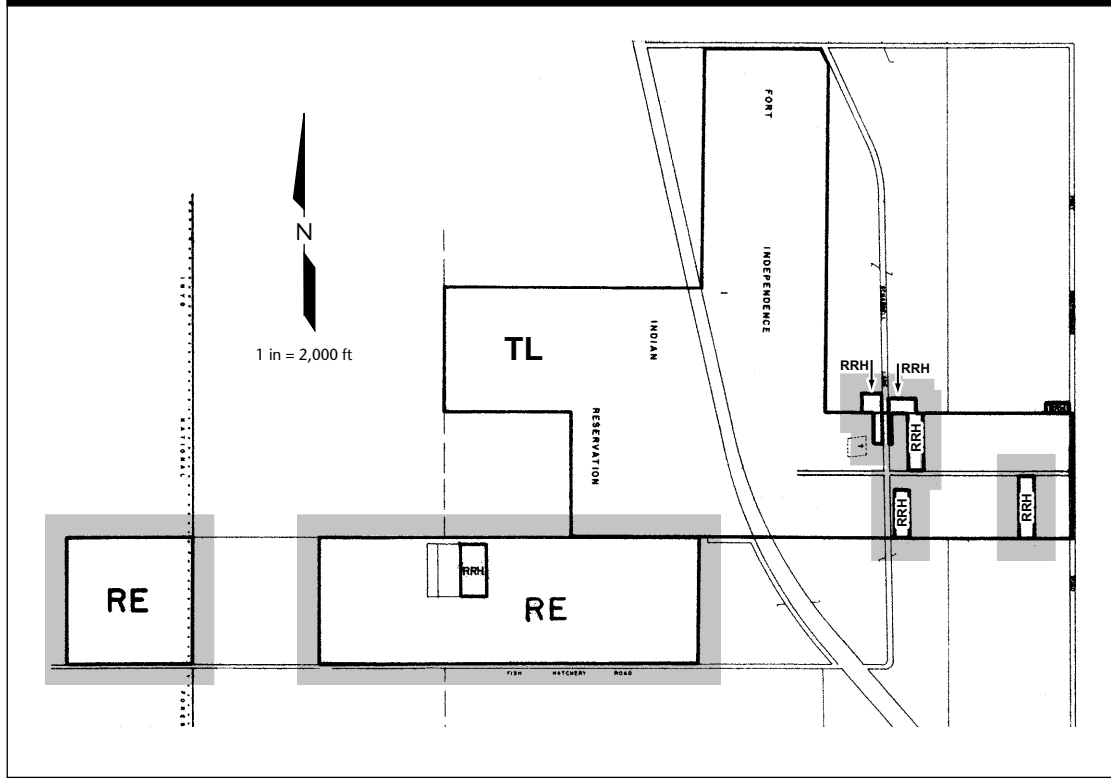


# Independence



# Fort Independence



**NOTE:**

The Independence Eastside Regreening Project is an Enhancement/Mitigation Project identified in the Inyo County-Los Angeles Long Term Ground Water Management Agreement and has been adopted as a mitigation measure by the City of Los Angeles to mitigate the impacts of its water gathering operations in Owens Valley from 1970 to 1990. (See 1991 EIR.)

In regard to such projects, Section 7.2 of the EIR (as modified by the final EIR) states that:

No enhancement/mitigation project which is an identified mitigation measure for the impacts of the project will be modified or discontinued except in full compliance with CEQA, and unless the standing committee finds that either:

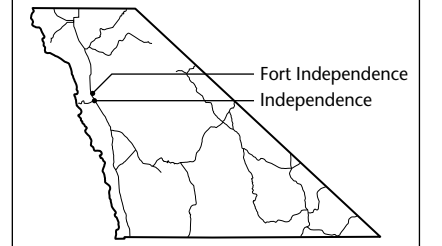
1. The enhancement/mitigation project, as modified, will continue to reduce the identified adverse effect of the project to a level which is less than significant;
2. A new mitigation measure will be implemented which will reduce the identified adverse effect of the project to a level which is less than significant.

Because the Independence Eastside Regreening Project has been adopted as a mitigation measure by the City of Los Angeles, any modification or discontinuation of the project also will require the approval of the Board of Water and Power Commissioners of the City of Los Angeles ("LADWP Board). Before the LADWP Board approves any modification or discontinuation of this project, the LADWP Board will have to comply with CEQA, will have to make the same findings as were made by the standing committee, and will have to adopt any new (or substitute) mitigation measures that may be required.

It should be noted that the relevant land use designation in the General Plan allows implementation of the Independence Eastside Regreening Project. The adoption of the Final Program Environmental Impact Report and General Plan Update does not alter any of the requirements described above, nor does the adoption constitute a determination that the Independence Eastside Regreening Project should be modified or discontinued. Such a determination can only be made in accordance with the procedures described above.

# Inyo County General Plan

## Land Use and Conservation/ Open Space Elements Diagram 15



### Key to Land Use Designations

<b>RESIDENTIAL</b>	
RR	Residential Ranch
RE	Residential Estate
RRM	Residential Rural Medium Density
RRH	Residential Rural High Density
RVL	Residential Very Low Density
RL	Residential Low Density
RM	Residential Medium Density
RMH	Residential Medium-High Density
RH	Residential High Density
<b>COMMERCIAL</b>	
CBD	Central Business District
RC	Retail Commercial
HC	Heavy Commercial/Commercial Service
REC	Resort/Recreational
<b>INDUSTRIAL</b>	
LI	Light Industrial
GI	General Industrial
<b>OTHER</b>	
NH	Natural Hazards
OSR	Open Space and Recreation
PF	Public Service Facilities
A	Agriculture
NR	Natural Resources
SFL	State and Federal Lands
TL	Tribal Lands/BIA

### Certificate of Adoption

I hereby certify that these elements, consisting of a text and thirty-one (31) maps are the land use and conservation/open space elements of the Inyo County General Plan that was recommended for adoption by the Inyo County Planning Commission on \_\_\_\_\_

Attest:  
 \_\_\_\_\_  
 Chair, Inyo County Planning Commission  
 \_\_\_\_\_  
 Charles S. Thistlethwaite, Director

### Certificate of Adoption

I hereby certify that the elements consisting of a text and thirty-one (31) maps are the land use and conservation/open space elements of the Inyo County General Plan that was adopted by the Inyo County Board of Supervisors on \_\_\_\_\_

Attest:  
 \_\_\_\_\_  
 Chair, Inyo County Board of Supervisors  
 \_\_\_\_\_  
 Clerk of the Board